

Parkheath

Sold on Service

Crowndale Road NW1
£1,495 PCM (£345 per week)



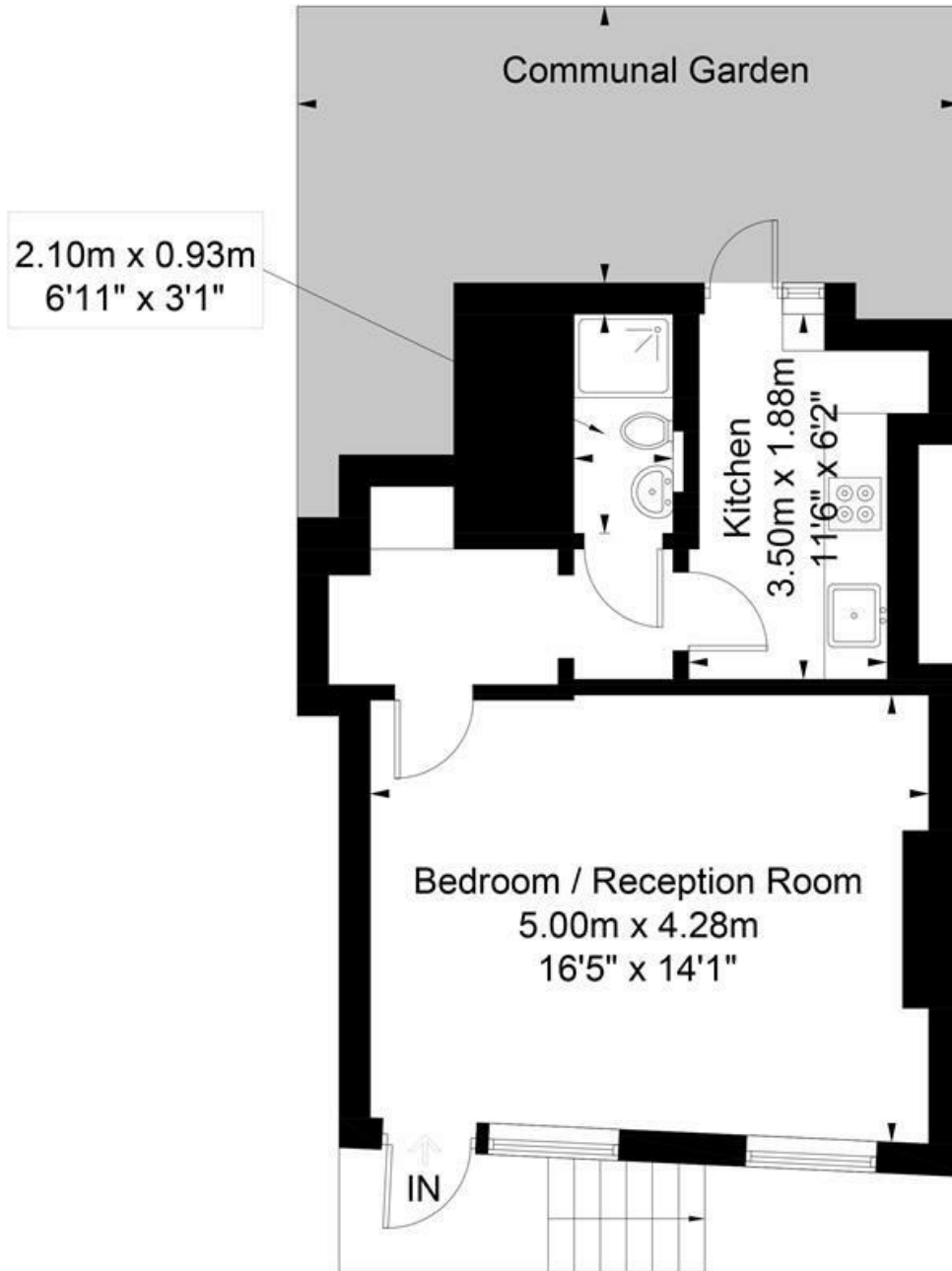
Self contained studio apartment
A private patio and communal garden
Separate kitchen with washing machine and full hob
Convenient location a stone's throw from the amenities of Camden High Street

Bright and airy reception/sleeping area
Shower room
One minute walk to Mornington Crescent underground (Northern Line, Zone 2)
£68 for Gas, Water and Electric per month

Kentish Town Office 020 7485 0400

Crowndale Road

Approximate Gross Internal Area = 38 sq m / 409 sq ft



Lower Ground Floor

Illustration for identification purposes only, measurements are approximate,
not to scale. FloorplansUsketch.com © 2019 (ID530615)
ELLIE CLAIRE PHOTOGRAPHY LTD

The particulars do not constitute part of an offer or contract. The particulars, including text, photographs and plans, are for the guidance only of prospective purchasers/tenants and must not be relied upon as statements of fact. The descriptions provided therein represent the opinion of the author and whilst given in good faith should not be construed as statements of fact. Nothing in these particulars shall be deemed a statement that the property is in good condition or otherwise or that any services or facilities are in good working order. All measurements are approximate